



CooperVision®  
Specialty EyeCare

## Senso E Min

Senso E Min is designed to fit the reversed shape cornea with minor irregularities. Senso E Min offers a good solution in case of rest ametropia after refractive surgery. The lens has no visible transitions. The reversed aspherical back surface geometry has the ideal design for the post-refractive cornea and guarantees crisp and clear vision and optimal comfort.

All our lenses are laser marked with our logo and a unique serial number; quality that you can recognize.

### Highlights

- First choice with rest-ametropia after refractive surgery
- Reversed back surface design
- Solution for the post-refractive surgical cornea with minor irregularities

### Fitting advice

Evaluate the fluorescein image

The central zone shows a steep fit

The peripheral zone will show alignment with the cornea

See 'Ideal fluor image E Min' for an example

Choose the maximum diameter to aid centration (minimal 90% of the cornea)

Determine the final lens power by overrefraction

### Parameter range

Radius (r0):	7.10 to 9.00 mm (in steps of 0.05 mm)
Eccentricity:	-0.20 to -0.40 (in steps of 0.10)
Power (F'v):	+20.00 D to -20.00 D (in steps of 0.25 D)
Diameter (ØT):	9.60 / 9.90 / 10.20* / 10.50 / 10.80 mm

\*Standard. Special parameters available on request

### Wear advice

The Senso E Min can be worn daily with a maximum of up to a year. It is advisable to replace this lens every 12 months.

### Technical information

Centre thickness:	0.18 mm
Back surface geometry:	Aspherical
Front surface geometry:	Full optics AB technology

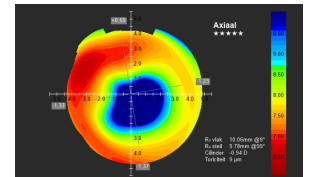
### Available materials

Cento Green\* Dk 58

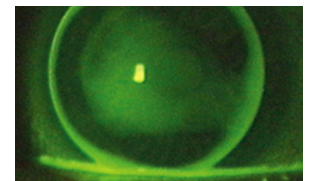
\*Standard material. The Senso E Min is available in all our materials.

Check the materials datasheet for the complete overview.

PROCORNEA  
**MED+**



Reversed topography



Ideal fluor image E Min

